

# Science Vocabulary Progression Document





Topic:

Year: EYFS

Strand:

Animals including humans
head
eyes
nose
mouth
ears
hands
fingers
feet
toes
arm
leg
animal

Plants
tree
leaf
flower
seed
stem
trunk
branch
petal
fruit

Materials
material
wood
glass
paper
hard
soft
shiny
rough
smooth

Seasonal changes
summer
winter
spring
autumn
day
night
light
dark
sun

Forces, Earth and space
Earth
moon
sun
star
planet
space

Sound, light and electricity
loud
quiet
volume
sound
light
dark



fish	hands, fingers
reptiles	environment
mammals	wings, birds
farm	beak
amphibians	paws
herbivore	fins, gills
omnivore	tail
carnivore	smell
leg, arm	see, look, hear, taste
backbone	listen, touch, feel
elbow	warm-blooded
head	temperature
ear, nose	pet
cold-blooded	wild
back	vertebrate





leaves
flowers
blossoms
petals
stem
fruit
bulb
seed
trunk
branches
evergreen trees
deciduous
common
garden

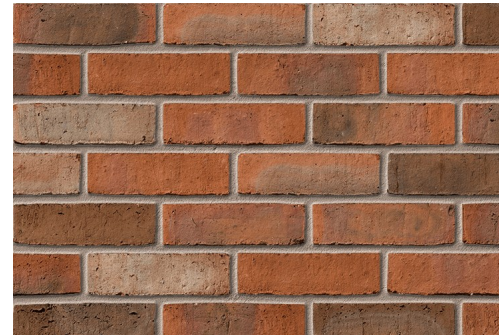
herb
roots
vegetation
vegetable
weed
wild





wood
metal
plastic
glass
water
paper
rock
hard
soft
bendy
rough
smooth
brick
card
rubber

fur
fleece
wool
stiff
polyester
shiny
dull
waterproof
absorbent
opaque
transparent
translucent
elastic





summer
spring
autumn
winter
sun
day
night
moon
light
dark
sunrise
sunset
months
temperature

sun
rain
snow, ice
hail
precipitation
wind
cloud
cloud cover
deciduous
evergreen tree
hibernate
freeze
weather
day length





survival
water
air
food
adult
baby
offspring
reproduce
grow
shelter
exercise
hygiene
healthy
bar chart

herbivore
carnivore
omnivore
balanced diet
bones
disease
life cycle
medicine
muscles
pet
pictogram
skeleton
body parts





seeds
bulbs
water
light
temperature
growth
healthy
soil
nutrients
leaves
flower/flowering
stem
roots
trunk

branches
common
crop
deciduous
evergreen
weed
wild
vegetation
garden
reproduce
fruit/vegetables/herbs
names of plants in the local environment





living	seashore
dead	ocean
habitat/microhabitat	rainforest
energy	arctic
food chain	air
predator	food
prey	water
woodland	shelter
pond	heat
desert	warmth
micro habitat	sun
field	biomes
hedgerow	source





hard	transparent
soft	brick
stretchy	paper
stiff	fabrics
shiny	squashing
dull	bending
rough	twisting
smooth	stretching
bendy	elastic
waterproof	foil
absorbent	cotton wool
opaque	polyester
properties	suitable





movement
muscles
bones
skulls
nutrition
skeletons
protection
nutrition
vitamins
fat
protein
carbohydrates
fibre
water

support
brain
ribs
heart
lungs
joint
pull
contract
relax
diet
exoskeleton
endoskeleton
tendons





air
light
water
nutrients
soil
reproduction
transportation
dispersed
pollination
fertilisation
germination
formation
support
grow

flowering
plants
roots
absorb
leaves
anther
carbon dioxide
climate zone
deciduous
dissect
evergreen
life cycle
mature
ovule

branches
bulb
common
deciduous
fruit
function
garden
healthy
leaf/leaves
petal
stigma
structure
vegetation
wild





fossils
absorb
weathered
sandstone
granite
marble
pumice
crystals
absorbent
rock
stone
pebble
boulder
grains
surrounding

texture
volcano
slate
sandy soil
clay soil
chalky soil
peat
bedrock
decaying
igneous
imprint
magma
leaf litter
man-made

metamorphic
mineral
molten
natural
nutrients
palaeontology
permeable
porous
prehistoric
preserve
pressure
properties
sediment
surface



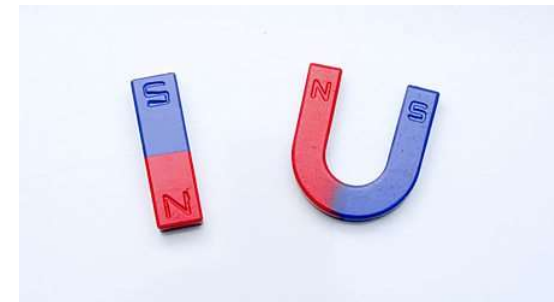


light	torch
shadows	candle
mirror	lamp
reflective	translucent
dark	transparent
reflection	opaque
sunglasses	angle
vision	bright
surface	dim
natural	electricity
star	emits
sun	product
moon	source
artificial	chemical reaction





magnetic	repel
force	poles
push	bendy
pull	gravity
opposite	magnetic field
friction	motion
surface	non-magnetic
north	resistance
south	squash
metal	twist
position	stretchy
steel	
contact	
attract	

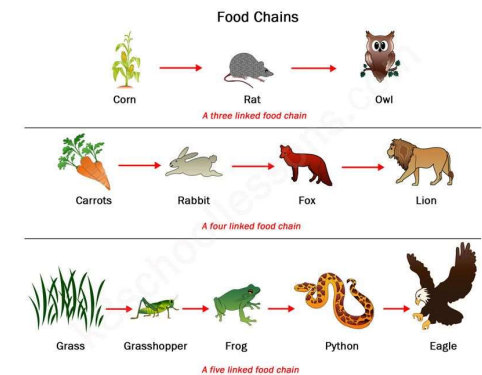




mouth
tongue
teeth
oesophagus
stomach
small intestine
large intestine
herbivore
carnivore
omnivore
canine
incisor
molar
digestive system

organs
salivary glands
enzymes
function
nutrients
energy
food chains
predator
prey
consumer
producer
absorb
decay
digestion

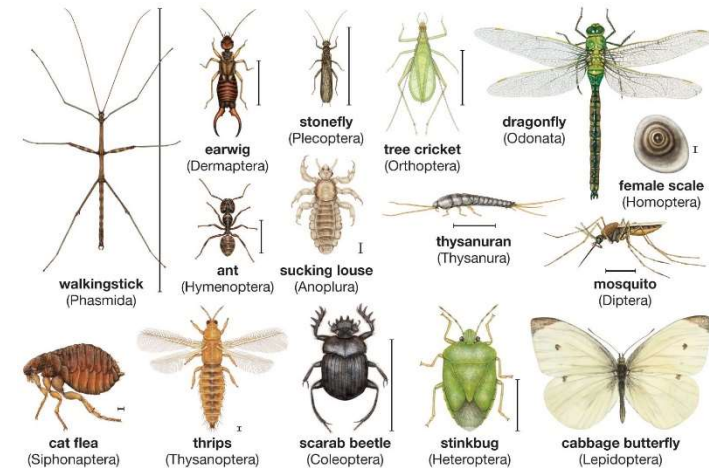
enamel
excretion
faeces
ingested
muscles
plaque
premolar
process
saliva





vertebrates
respiration
amphibians
vegetation
urban
mammals
invertebrates
food chain
life processes
microhabitat
nutrition
insects/minibeast
environment
habitat
biomes

crustaceans
sensitivity
classification key
endangered
protection
species
carnivore
herbivore
omnivore
criteria
deciduous
evergreen
excretion
organism
reproduction

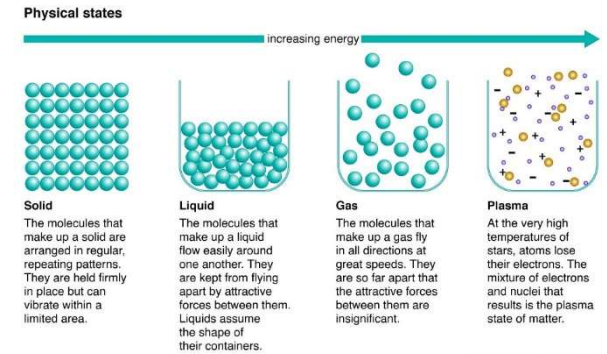


© 2012 Encyclopædia Britannica, Inc.



solid
liquid
gas
evaporation
condensation
particles
temperature
freezing
heating
vibration
melting
water cycle
materials
thermometer

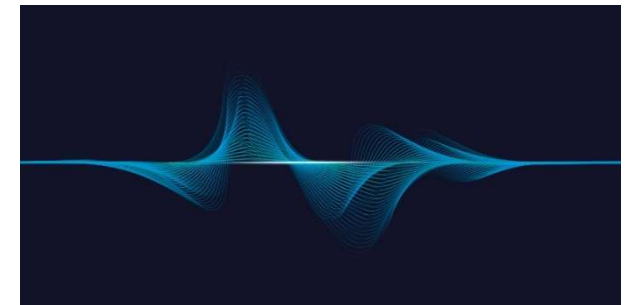
cooling
freezing point
melting point
precipitation
process
water vapour
properties





volume
vibration
wave
pitch
tone
speaker
distance
travels
highest
lowest
sound source
produce

amplitude
decibel
electricity
energy
frequency
medium
power
sound waves
transmit
travel





cells

wires

bulbs

switches

buzzers

circuit

battery

series

conductors

insulators

components

appliances

function

factors

current

device

electricity

energy

fuel

generate

mains

motor

power

source





foetus
embryo
womb
gestation
baby
toddler
teenager
adult
elderly
growth
development
puberty
adolescence
reproduction

adulthood
genitals
hormones
independent
infancy
life cycle
life processes
mature
menopause
menstruation
offspring
organ
rapid
vertebrate





mammal
reproduction
insect
amphibian
bird
offspring
bird (types)
fish (types)
vertebrate
invertebrate
omnivore
herbivore
carnivore
species

anther
bulb
cell
dispersed
dissect
embryo
fertilisation
flower/flowering
function
gamete
germination
life cycle
mature
metamorphosis

ovary
ovule
petal
plant
pollen
pollination
seed
stigma
structure





hardness
solubility
transparency
conductor
magnetic
filtering
evaporation
dissolve
dissolving
mixing
soluble
insoluble
solution
absorbent

permeable
malleable
reversible
irreversible
chemical
reaction
circuit
electricity
insulator
condensation
flexible
gas
liquid
melting

particles
process
properties
rate
resistance
solid
state
temperature
thermal
variable
water cycle





Earth	Northern hemisphere
Moon	Southern hemisphere
Sun	asteroid
axis	comet
rotation	galaxy
spin	gravity
universe	leap year
star	meteorite
constellation	orbit
phases of the moon	sphere
time zone	shadow
planet	Solar system
season	





air resistance
----------------

water resistance
------------------

friction
----------

gravity
---------

Newton
--------

gears
-------

pulleys
---------

lever
-------

motion
--------

cog
-----

buoyancy
----------

mechanism
-----------

streamline
------------

brake
-------

opposite
----------

machine
---------

attract
---------

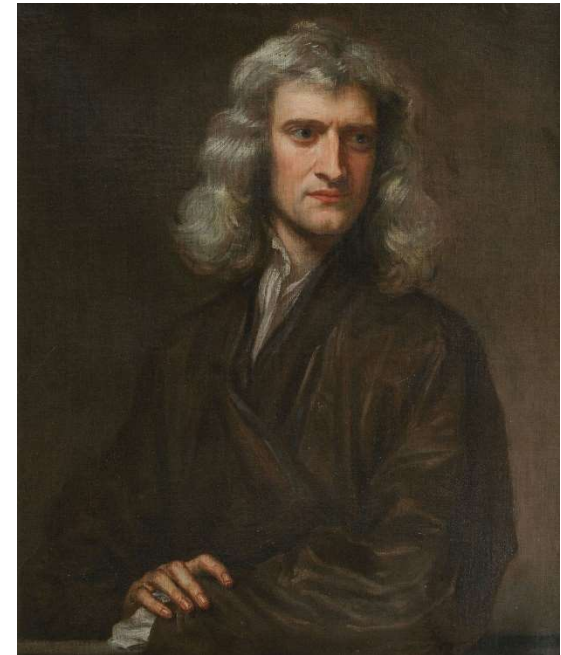
force
-------

repel
-------

resistance
------------

spring
--------

surface
---------

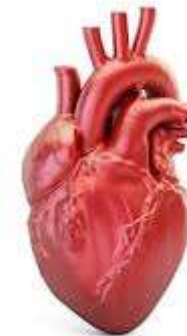




Circulatory system
heart
blood vessels
veins
arteries
oxygenated
deoxygenated
valve
exercise
respiration
double circulation
pump
capillaries

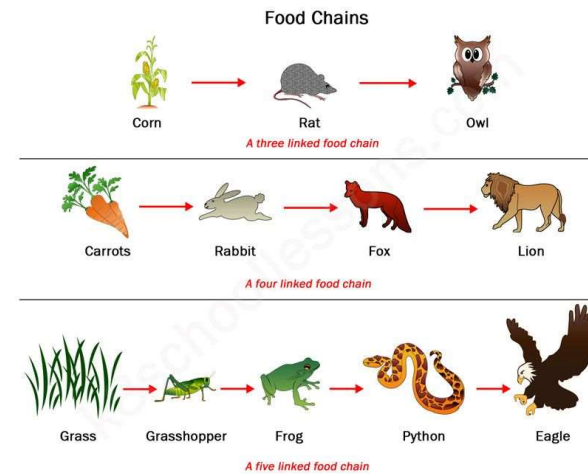
lungs
oxygen
carbon dioxide
gaseous exchange
pulse rate
heart chambers
blood group
muscle
skeleton
smoking
aorta
nutrients
organ

pulse
vena cava
ventilation
via





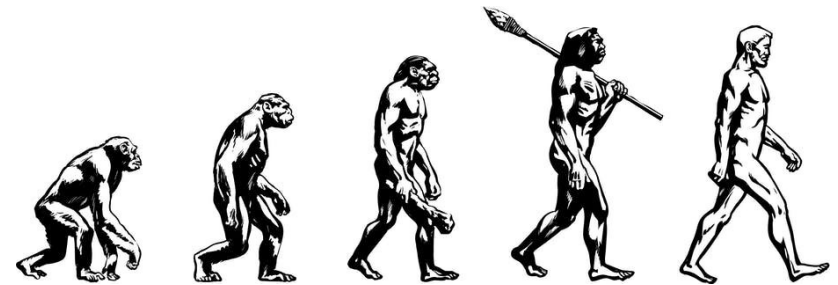
classification key	carnivore
vertebrates	characteristics
invertebrates	criteria
organism	energy
amphibians	environment
reptiles	evolution
mammals	food chain
insects	herbivore
habitat	omnivore
micro-habitat	microorganism
taxonomy	mini beast
bacteria	predator
virus	prey
adaptation	species





classification
vertebrates
invertebrates
environment
species
survive
theory
variation
extinct
evolution
taxonomy
bacteria
virus
adaptation

ancestor
biodiversity
biome
breeding
characteristics
fossil
generation
inherit
maladaptation
mutation
natural selection
offspring
palaeontology
reproduction





refraction	pupil
reflection	iris
light	lens
spectrum	eyelid
source	convex
colour	concave
opaque	kaleidoscope
transparent	periscope
translucent	source
torches	angle
absorption	dark
dispersion	electricity
shadow	emits
dim	mirror

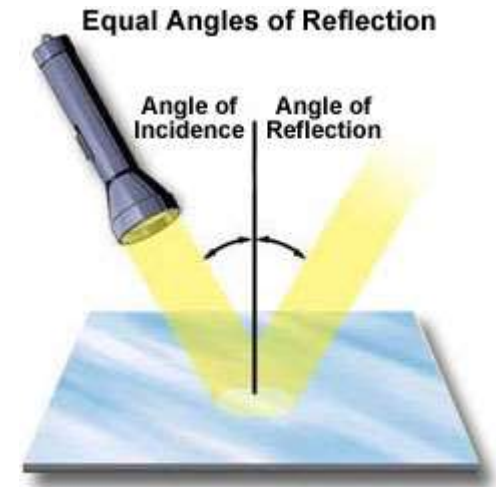


Figure 1



cells	parallel	device
wires	crocodile clips	electricity
bulbs	symbol	energy
switches	circuit diagram	fuel
buzzers	fuse wire	generate
circuit	bright	mains
series	component	power
conductors	dim	resistance
insulators	filament	resistor
amps	electromagnetic	source
volts	ammeter	voltage
current	appliances	
motor	battery	

