



Topic: The kingdom of Benin

Year: 6

Strand: History

What should I already know?

We Are Building Our Knowledge From:

- Romans in Britain (Y4)
- Early Islamic Civilization (Y5)

Historical skills and Enquiry

What was the Kingdom of Benin, and how were European countries involved with it?

- Evolution & Technology
- Beliefs
- Society
- Change Makers
- Conflict

Important facts that I will learn

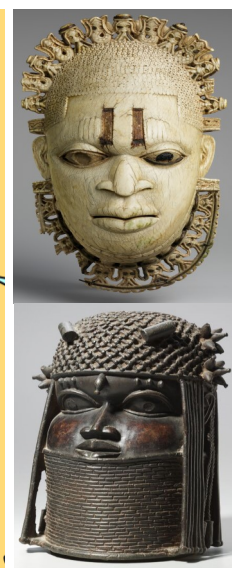
The Kingdom of Benin began under the rule of a line of mysterious kings called Ogisos. Ogiso means 'king of the sky' in the Edo language.

After the Ogiso rulers came the Oba. The Oba had complete power. He was the head of Edo society, the army, land and trade

The Kingdom of Benin was in a place that is now a part of modern day Nigeria in West Africa. It is not in the same place as the modern African nation of Benin. The Kingdom of Benin was home to the Edo people who, in around 900 CE, began clearing parts of the rainforests of West Africa to build their homes. The Edo people worked together to build a community of farmers and craftspeople who traded successfully. Small settlements soon grew into the larger kingdom of Igodomigodo, which was ruled by kings called Ogisos (kings of the sky). After being governed by over 30 different Ogisos, the kingdom was then controlled by a new dynasty of rulers, called the Oba. The Kingdom had many skilled craftsmen who were commissioned by the Oba to produce highly sophisticated bronze and brass sculptures that have become known as "Benin Bronzes".

Vocabulary

colonial:	relating to a country controlled by a more powerful country
empire:	a number of nations controlled by one country
dynasty:	a line of hereditary rulers of a country
trade:	to buy and sell goods guilds: groups of people who do the
worshipped:	paid respect to
fortifications:	buildings, walls and ditches built to protect a place
concurrently:	taking place at the same time
archaeologists:	people who study the past by examining remains and objects
oral tradition:	a community's culture and history passed down by word of mouth
Oba	King
Eweka	The First King of Benin Kingdom



Time line

900: Benin Kingdom is first established when small villages join together in a conglomerate.

AD 1180 The first dynasty of Ogiso kings ends and the Obas begin their rule. .

AD 1514 Oba Esigie sets up trading links with Portuguese and other European visitors.

AD 1897: Benin City is destroyed by British troops and Benin comes under Britain's control.

900-1400

An enormous earthen moat is built around the Kingdom boundaries

AD 1440 : benin begins to expand and thrive under the rule of Oba Ewuare the Great.

AD 1700 B enin Kingdom enters a period of decline due to a series of civil wars and the abolition of the slave trade with Europe.